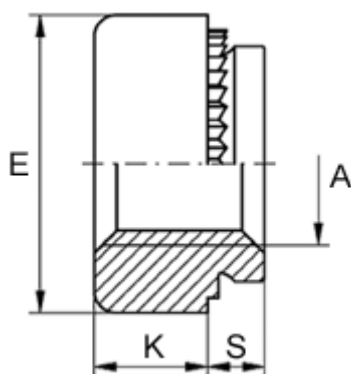


Data Sheet



Article number: 12501000060500
Description: KLEE-coil 501 000 060.500
M6 Stainless 1.4305

Measures



Female thread A	= M6
Height K	= 4.0
Max recess height	= 1.0
Min distance to edge	= 5.0
Outer diameter E	= 11.0
Plate thickness	= 1.4 to 2.3
Recommended bore diameter +0.05	= 9.00